

WHAT ARE THE SYMPTOMS OF A STROKE?

Ischemic strokes, the most common type of strokes, can be treated with a drug called t-PA that dissolves blood clots obstructing blood flow to the brain. The window of opportunity to start treating stroke patients is three hours, but to be evaluated and receive treatment, patients need to get to the hospital within 60 minutes.

What is the benefit of treatment?

A five-year study by the National Institute of Neurological Disorders and Stroke (NINDS) found that some stroke patients who received t-PA within three hours of the start of stroke symptoms were at least 30 percent more likely to recover with little or no disability after three months.

How can I reduce my risk of stroke?

The best treatment for stroke is prevention. Several factors increase your risk of having a stroke:

- High blood pressure
- Heart disease
- Smoking
- Diabetes
- High cholesterol
- Physical inactivity/obesity

If you smoke – quit. If you have high blood pressure, heart disease, diabetes, or high cholesterol, get them under control. If you are overweight, start a healthy diet and exercise regularly.

UR Medicine Neurosurgery Comprehensive Stroke Center

Strong Memorial Hospital
601 Elmwood Ave, Box 670 Rochester, NY 14627
p: (585) 275-2530
f: (585) 756-5189

Para más información, póngase en contacto con:

Rose Gilbert, Director of Program Development:
rose_gilbert@urmc.rochester.edu

Diana Proper, Regional Surgical Stroke Coordinator:
diana_proper@urmc.rochester.edu



WHAT IS A STROKE?



A stroke, sometimes called a “brain attack,” occurs when blood flow to the brain is interrupted. When a stroke occurs, brain cells in the immediate area begin to die because they stop getting the oxygen & nutrients they need to function.

What causes a stroke?

There are two major kinds of stroke. The first, called an ischemic stroke, is caused by a blood clot that blocks or plugs a blood vessel or artery in the brain. About 80 percent of all strokes are ischemic. The second, known as a hemorrhagic stroke, is caused by a blood vessel in the brain that breaks and bleeds into the brain. About 20 percent of strokes are hemorrhagic.

What disabilities can result from a stroke?

Although stroke is a disease of the brain, it can affect the entire body. The effects of a stroke range from mild to severe and can include paralysis, problems with thinking, problems with speaking, and emotional problems. Patients may also experience pain or numbness after a stroke.



**KNOW
STROKE**
KNOW THE SIGNS. ACT IN TIME.

Stroke Strikes Fast. You Should Too.
Call 911.

WHAT ARE THE SYMPTOMS OF A STROKE?

The symptoms of stroke are distinct because they happen quickly:

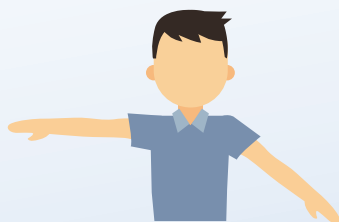
- Sudden numbness or weakness of the face, arm, or leg (especially on one side of the body)
- Sudden confusion, trouble speaking or understanding speech
- Sudden trouble seeing in one or both eyes
- Sudden trouble walking, dizziness, loss of balance or coordination
- Sudden severe headache with no known cause

What should a bystander do?

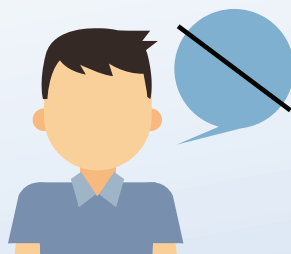
If you believe someone is having a stroke – if he or she suddenly loses the ability to speak, or move an arm or leg on one side, or experiences facial paralysis on one side – call 911 immediately.



Face Drooping



Arm Weakness



Speech Difficulty



Time to call 911



KNOW STROKE

Stroke is a leading cause of death and serious, long-term disability in adults in the United States. About 795,000 new strokes are reported in the U.S. each year. The good news is that treatments are available that can greatly reduce the damage caused by a stroke. However, you need to recognize the symptoms of a stroke and get to a hospital quickly. Getting treatment within 60 minutes can prevent disability.



ACT IN TIME

Stroke is a medical emergency. Every minute counts when someone is having a stroke. The longer blood flow is cut off to the brain, the greater the damage. Immediate treatment can save people's lives and enhance their chances for successful recovery.

